



# Mid-Region Metropolitan Planning Organization of the Albuquerque Metropolitan Planning Area

## Metropolitan Transportation Planning

In the Albuquerque  
Metropolitan  
Planning Area

East Gateway Coalition

October 15, 2009



# What We'll Talk About

- ◆ The Mid-Region Council of Governments (MRCOG)
- ◆ The Mid-Region Metropolitan Planning Organization (MRMPO)
- ◆ What does the MRMPO do?



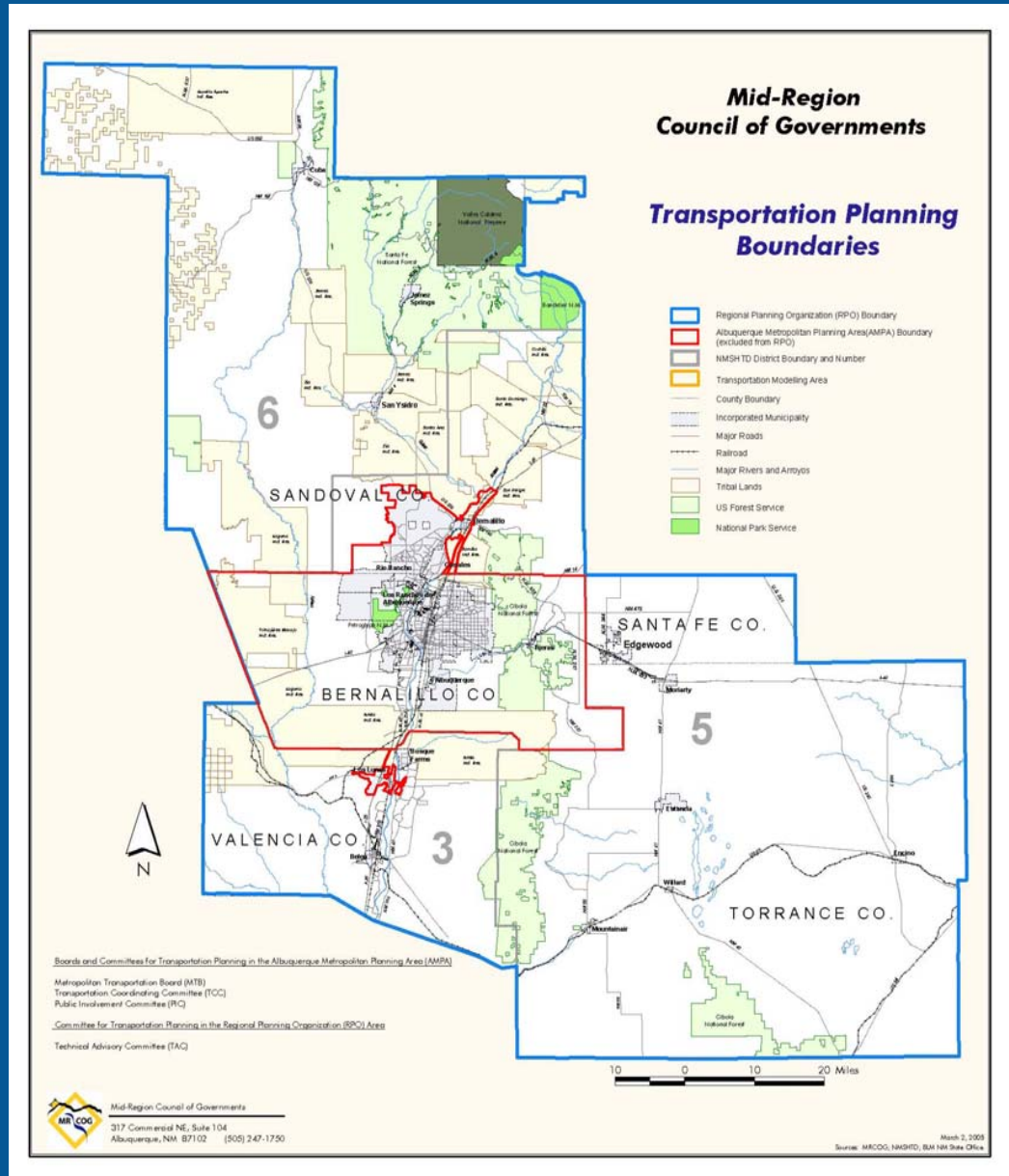
# Mid-Region Council of Governments

- ◆ MRCOG established by State statute (1969)
  - ◆ Primary function is to serve as a regional comprehensive planning, development, and coordinating body
  - ◆ Composed of local governments and agencies within State Planning and Development District Three (seven districts in NM)
  - ◆ Provides administrative support for programs
  - ◆ Governed by Articles of Agreement between members
    - MRCOG Board of Directors
    - Cooperative – members encouraged to comply with MRCOG directives

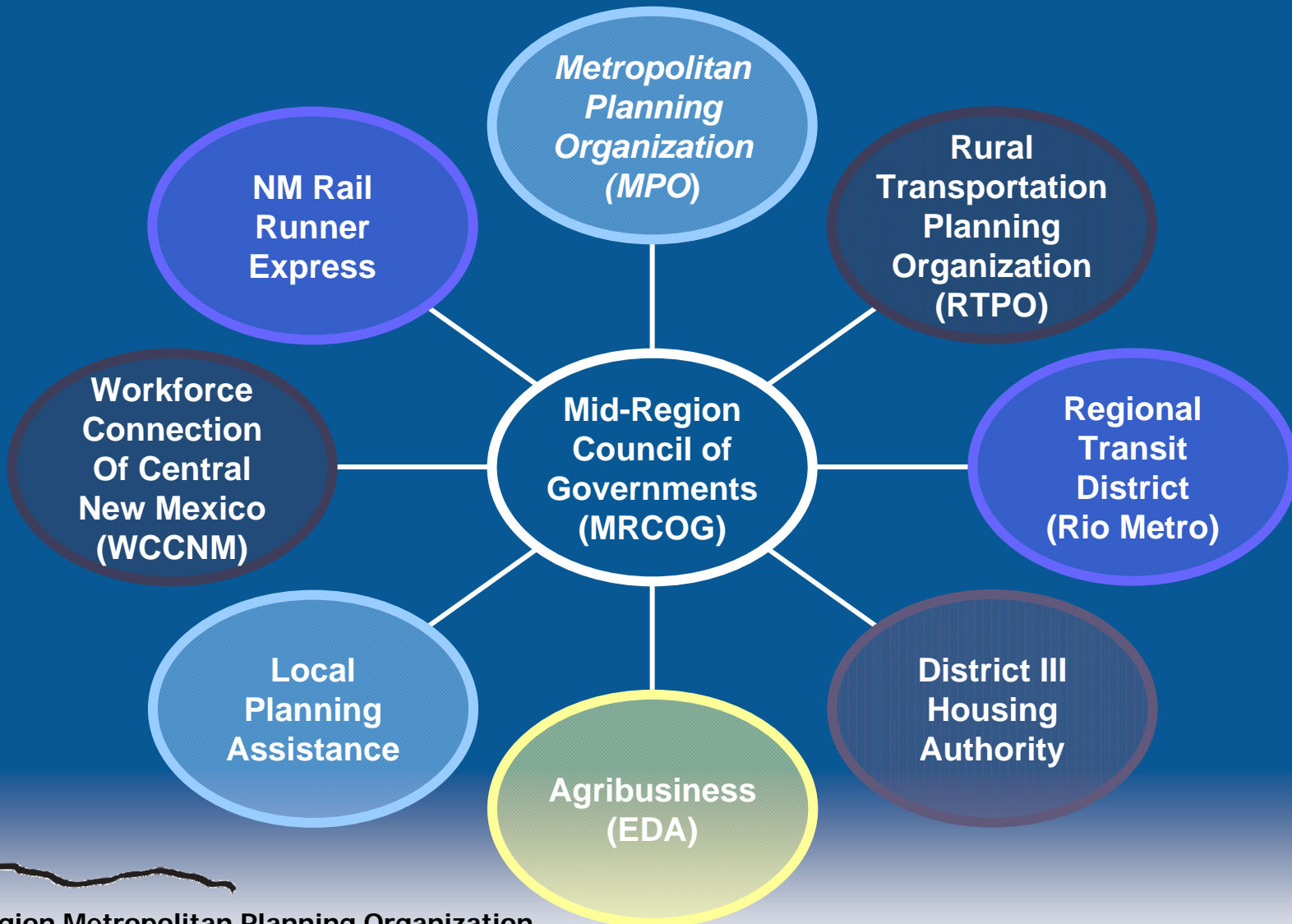


# Mid-Region Council of Governments

## MRCOG Planning Area



# MRCOG Program Areas





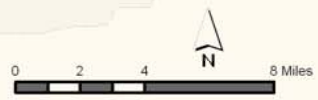
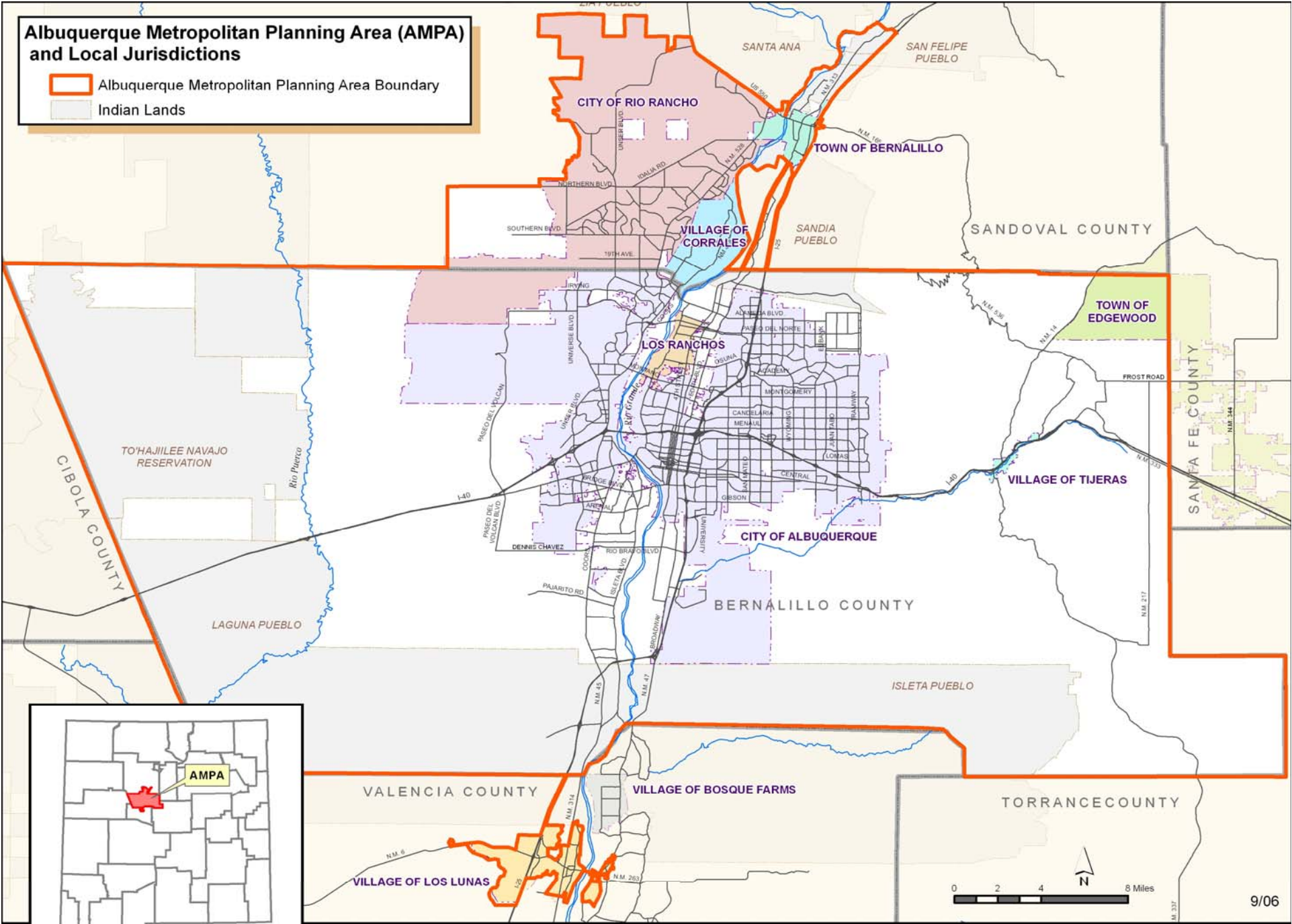
# Metropolitan Planning Organizations

- ◆ Created and defined by *federal law* (Title 23 of the US Code)
- ◆ Defined as “The policy board of an organization created and designated to carry out the metropolitan transportation planning process”
- ◆ All 381 MPOs serve their respective Metropolitan Planning Areas as the forum for *cooperative* transportation *decision-making*



# Albuquerque Metropolitan Planning Area (AMPA) and Local Jurisdictions

-  Albuquerque Metropolitan Planning Area Boundary
-  Indian Lands



# Metropolitan Transportation Planning Partners

**MPO**  
(includes all  
member  
governments)

Transportation  
Planning  
Process

**Transit  
Providers**  
(ABQ Ride,  
MRTD, NM Rail  
Runner  
Express)

**State  
DOT**  
(NMDOT)



**Mid-Region Metropolitan Planning Organization**  
*for the Albuquerque Metropolitan Planning Area*



# MPO Participants

- ◆ Federal agencies
  - ◆ Federal Highway Administration (FHWA)
  - ◆ Federal Transit Administration (FTA)
  - ◆ Environmental Protection Agency (EPA)
- ◆ State agencies
  - ◆ NMDOT
  - ◆ NM Environment Department
- ◆ Local agencies
- ◆ Native American Tribes and Pueblos
- ◆ Stakeholders
- ◆ The Public



# MPO Decisions

- ◆ Metropolitan Transportation Board (MTB)
  - ◆ Elected officials, officials of agencies that administer/operate major modes, appropriate State officials
  - ◆ Advisory committees
    - Transportation Coordinating Committee (TCC)
      - Provides technical advice to the MTB
    - Public Involvement Committee (PIC)
      - Provides an interface between MTB and the public
  - ◆ Approve transportation plans and programs in the AMPA; establish regional transportation policy



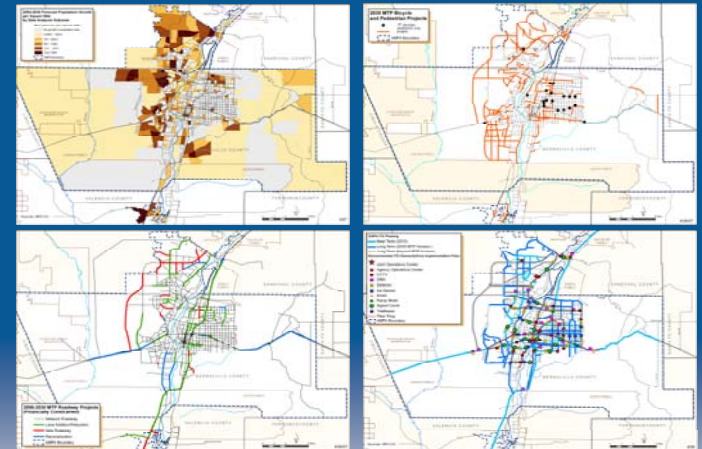
# Metropolitan Planning Organizations

- ◆ What does an MPO do?
  - ◆ *Metropolitan Transportation Plan*
  - ◆ Transportation Improvement Program
  - ◆ Public Involvement
  - ◆ Unified Planning Work Program
  - ◆ Congestion Management Process
  - ◆ Transportation Conformity
  - ◆ Certification



# Metropolitan Transportation Plan (MTP)

- ◆ Federal requirements
  - ◆ At least a 20-year planning horizon
  - ◆ Includes:
    - Long- and short-range strategies
    - All modes
    - Congestion Management Process (CMP) strategies
    - Public involvement
  - ◆ Outline past and present transportation trends; project future growth and land use
  - ◆ Forecast travel demand
  - ◆ Financial constraint
  - ◆ Update every 5 years (attainment areas); every 4 years (nonattainment and maintenance areas)
  - ◆ Approved by the MTB



# MTP (continued)

## ◆ The 2035 MTP

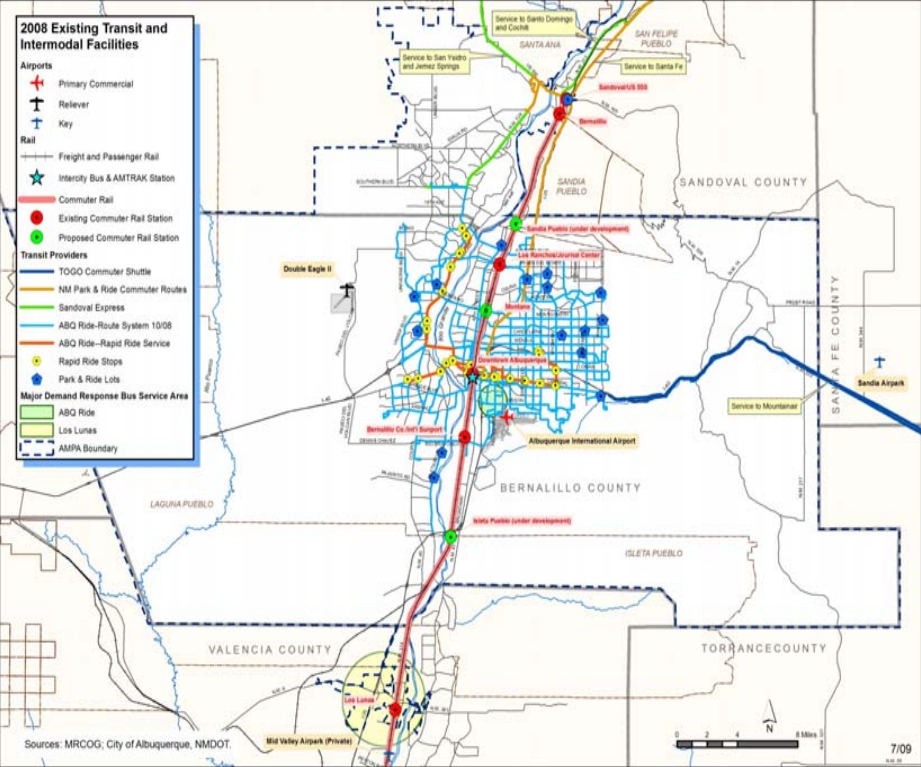
- ◆ 2008 base-year conditions largely complete
- ◆ Now working on interim and horizon-year analyses and articulating goals
- ◆ Conformity determination to be made by Federal partners no later than June 30, 2011



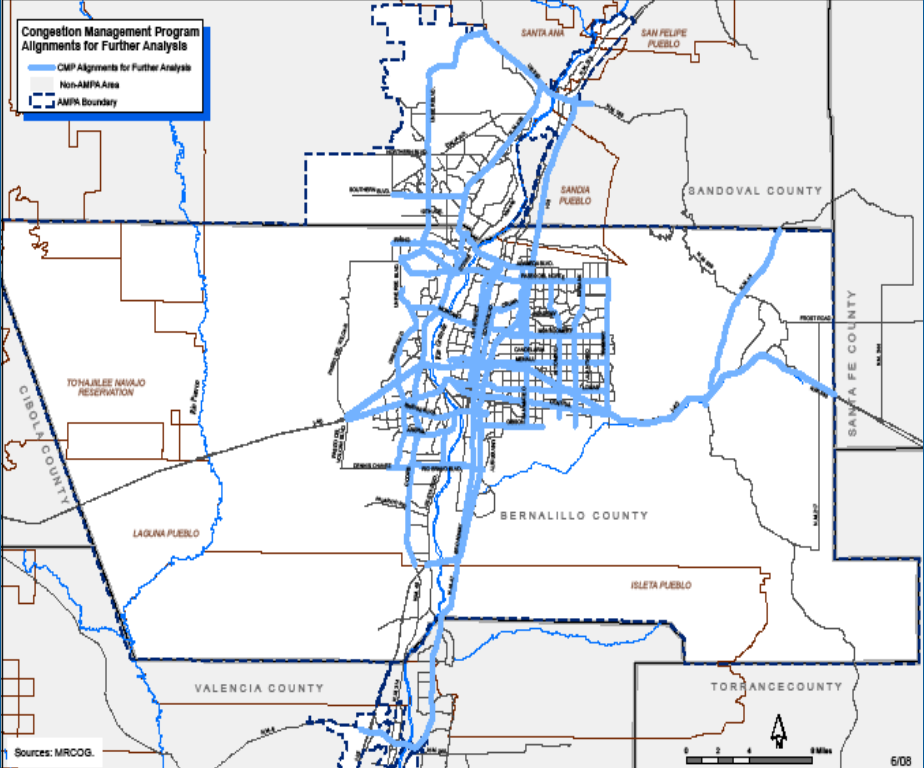


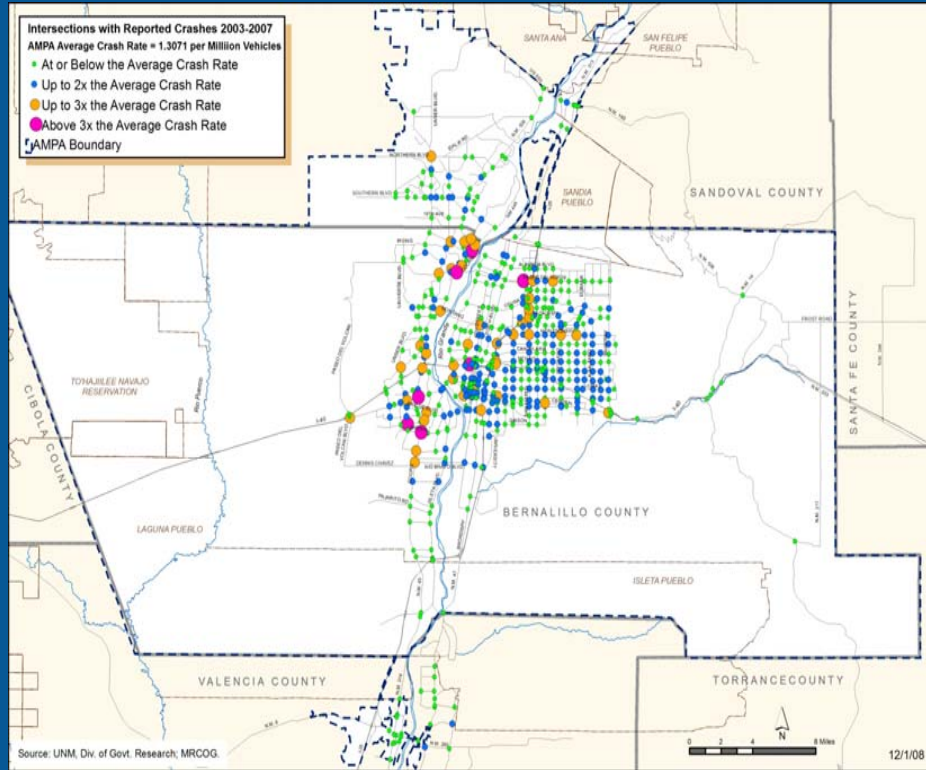


# Transit Facilities



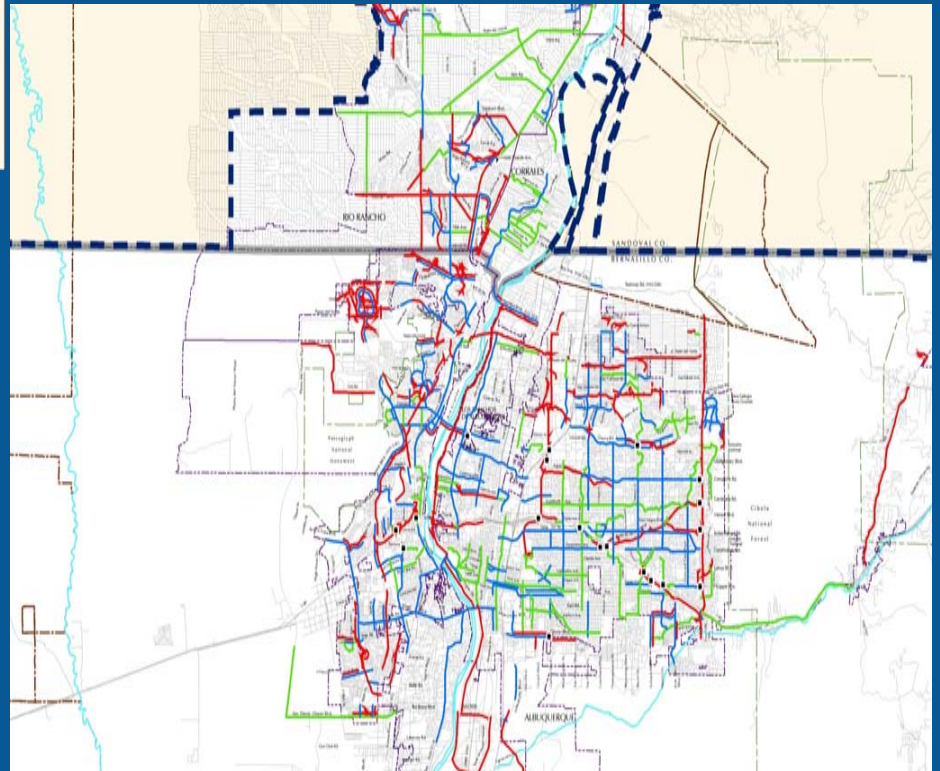
# Congested Roadways





## Crash Data

## Bicycle Facilities



# Questions/Comments

Web – [www.mrcog-nm.gov](http://www.mrcog-nm.gov)

Jack A. Lord, AICP

Transportation Program Manager

Tel – 724-3632

Email – [jlord@mrcog-nm.gov](mailto:jlord@mrcog-nm.gov)

[MTPcomments@mrcog-nm.gov](mailto:MTPcomments@mrcog-nm.gov)



Mid-Region Metropolitan Planning Organization  
*for the Albuquerque Metropolitan Planning Area*