

Corridor Notes

- Paseo del Norte is a limited access principal arterial and major river crossing that connects residential areas in northwest and northeast Bernalillo County with the Journal Center and the I-25 corridor.
- The CMP corridor runs from Universe Blvd to Tramway Blvd.
- Paseo is noteworthy for instances of intense **congestion** around Coors and between Jefferson and San Pedro. Overall, Paseo features slow speeds except for the western edge of the corridor. Congestion is associated with high peak period volumes and slow speeds toward I-25 in the AM and away from I-25 in the PM.
- The highest **volume** portion of the corridor is between Coors and Jefferson (60,000-80,000 daily vehicles). Volumes are significantly lower in the far eastern and western segments of Paseo.
- The highest **speeds** are found along the access-controlled segments: east of Coors in the eastbound direction; west of 2nd St in the westbound direction.
- **Crash rates** along Paseo del Norte are 80% above the regional average and among the highest of all CMP corridors. The intersections at Jefferson and Coors have crash rates that are four-and-a-half and almost six times the regional average respectively.
- The study area is projected to see moderate population **growth** (32%) and significant growth in employment (84%) by 2035.

Profile & Statistics

Corridor Profile			
Study Area	26.1 Sq. Miles		
Length & No. of Segments	13.5 Miles - 20 segments		
Functional Class	Principal Arterial		
Access Control	Limited access: Entire corridor		
Lanes	2 - 6 lanes Majority of corridor is 6 lanes 2 lanes from Universe to east of Kimmick		
Intelligent Transportation Systems	Designated corridor: Yes ITS deployment: Yes - PF, CCTV, DMS, VDS		
Transit	ABQ Ride : Route 551 (commuter), Route 251 (Rail Runner connection) Facilities: Rail Runner station on El Pueblo		
Bicycle Facilities	Lanes: East of Kimmick to Golf Course Rd Trail: Golf Course Rd to Rancho Sereno Trail West of Coors to No. Diversion Channel Trail: Wyoming to Tramway		
Summary Data			
Daily Volume	10,000 - 82,000		
Average Speeds (PM East)	17 - 66 mph		
Average Speeds (PM West)	18 - 56 mph		
Total Delay (PM East)	222 seconds (16 sec./mile)		
Total Delay (PM West)	312 seconds (23 sec./mile)		
Demographic Trends			
Measure	2000	2008	2035
Population	42,098	57,225	75,615
Employment	20,318	24,100	44,268
Corridor Ranks			
Volume/Capacity Ratio	7 / 30		
Speed Differential	3 / 30		
Crash Rates	3 / 30		
Overall Rank	3 / 30		

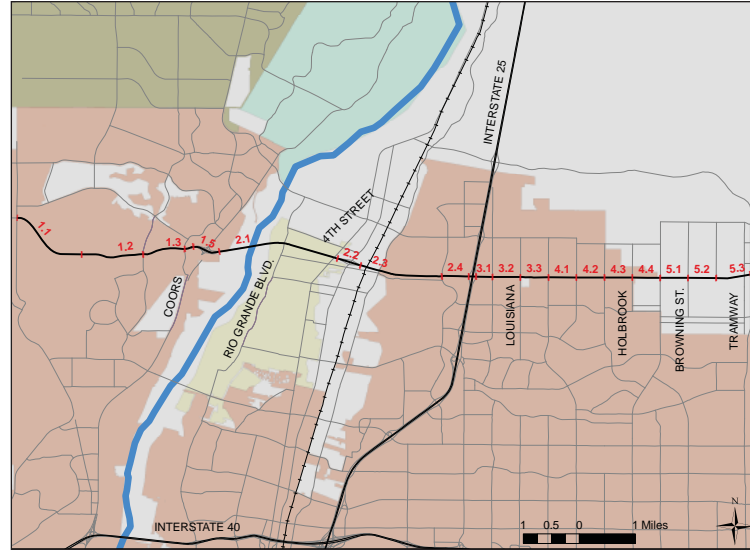
Transit Characteristics

- Two ABQ Ride routes operate along or parallel to Paseo del Norte between Coors and Jefferson. Route 251 provides connections between Rio Rancho, the Rail Runner station at El Pueblo, and the Journal Center. Commuter Route 551 follows the same route (without a stop at the El Pueblo Rail Runner station).
- Overall ridership among the routes serving Paseo del Norte is modest. Routes 251 and 551 carried a combined 250 riders per weekday in April 2011.
- The Los Ranchos/El Pueblo Rail Runner station – just south of Paseo del Norte between 2nd St. and Edith – is the second-most used Rail Runner station with 566 boardings per weekday in April 2011.

ID and Segment Names

ID	Location	Length (Miles)	Posted Speed (MPH)	2010 Volume (AWDT)
1.1	EAST OF UNIVERSE - WEST OF KIMMICK	1.43	35	13,451
1.2	EAST OF KIMMICK - WEST OF GOLF COURSE	1.11	45	12,447
1.3	EAST OF GOLF COURSE - WEST OF EAGLE RANCH RD.	0.76	45	27,671
1.4	EAST OF EAGLE RANCH RD. - WEST OF COORS W. RAMPS	0.16	50	38,620
1.5	EAST OF COORS W. RAMPS - WEST OF COORS E. RAMPS	0.49	50	31,875
2.1	EAST OF COORS E. RAMPS - WEST OF PDN/2ND WEST RAMPS	2.16	50	81,771
2.2	EAST OF PDN/2ND WEST RAMPS - WEST OF PDN/2ND EAST RAMPS	0.43	50	54,700
2.3	EAST OF PDN/2ND EAST RAMPS - WEST OF JEFFERSON	1.48	50	64,355
2.4	EAST OF JEFFERSON - WEST OF PAN AM. WEST	0.48	45	60,112
2.5	EAST OF PAN AM. WEST - WEST OF PAN AM. EAST	0.13	45	27,661
3.1	EAST OF PAN AM. EAST - WEST OF SAN PEDRO	0.29	45	36,768
3.2	EAST OF SAN PEDRO - WEST OF LOUISIANA	0.50	45	41,768
3.3	EAST OF LOUISIANA - WEST OF WYOMING	0.50	55	43,368
4.1	EAST OF WYOMING - WEST OF BARSTOW	0.50	55	26,875
4.2	EAST OF BARSTOW - WEST OF VENTURA	0.50	55	32,933
4.3	EAST OF VENTURA - WEST OF HOLBROOK	0.50	55	26,904
4.4	EAST OF HOLBROOK - WEST OF EUBANK	0.50	55	25,086
5.1	EAST OF EUBANK - WEST OF BROWNING	0.50	55	13,547
5.2	EAST OF BROWNING - WEST OF LOWELL	0.50	55	12,894
5.3	EAST OF LOWELL - WEST OF TRAMWAY	0.61	55	11,235

ID Location



Volume Notes

- The heaviest volumes along Paseo del Norte occur between Coors and 2nd St (82,000 AWDT in 2010).
- Overall average volumes increased by 31% between 2000 and 2008. During that same period, the population in the study area increased by 36%.
- The highest volume increase (74%) from 2000 to 2010 occurred at the Coors intersection.
- In 2010, 82,000 vehicles crossed the Rio Grande along Paseo del Norte each weekday.

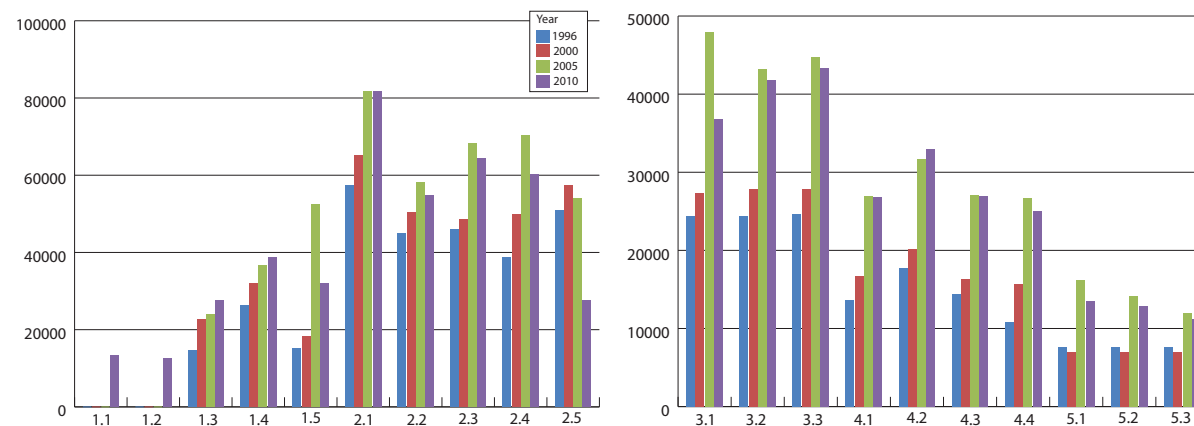
Access Notes

- Paseo del Norte is an **access-controlled facility** along the entire CMP corridor.
- There are no center turn lanes along Paseo del Norte. The only opportunities for left turns are at intersections.
- There are 17 **signalized intersections** along the CMP corridor; an average of one signal **every 0.80 miles**.

Access Characteristics

ID	East-Bound				W-Bound				Center-Turn Lanes
	Driveways	Intersections	Right-Turn Lanes	On-Street Parking	Driveways	Intersections	Right-Turn Lanes	On-Street Parking	
1.1	0	0	0	No	0	0	0	No	No
1.2	0	1	1	No	0	0	0	No	No
1.3	0	2	1	No	0	2	1	No	No
1.4	0	0	0	No	0	1	1	No	No
1.5	0	0	0	No	0	0	0	No	No
2.1	0	0	0	No	0	0	0	No	No
2.2	0	0	0	No	0	0	0	No	No
2.3	0	0	0	No	0	0	0	No	No
2.4	0	1	1	No	0	1	0	No	No
2.5	0	1	0	No	0	1	0	No	No
3.1	1	1	1	No	0	0	1	No	No
3.2	0	1	1	No	0	1	1	No	No
3.3	2	1	1	No	0	1	1	No	No
4.1	1	1	0	No	0	0	1	No	No
4.2	0	1	1	No	0	1	0	No	No
4.3	0	1	0	No	0	1	0	No	No
4.4	0	1	0	No	0	1	0	No	No
5.1	0	1	1	No	0	1	0	No	No
5.2	0	1	1	No	0	1	1	No	No
5.3	0	1	1	No	0	1	1	No	No
Total	4	15	10		0	13	8		No

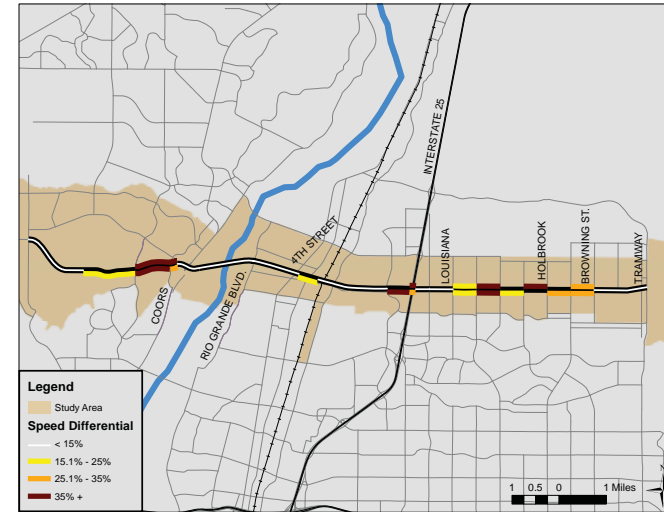
Average Weekday Daily Traffic



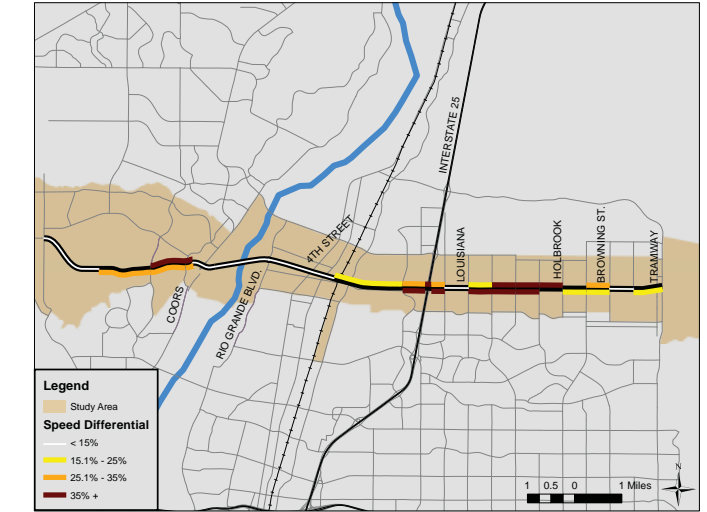
Speed Differential (Observed Speed vs. Posted Speed)

ID	Location	Posted Speed	Speed (MPH)				Speed Differential			
			AM-WB	AM-EB	PM-WB	PM-EB	AM-WB	AM-EB	PM-WB	PM-EB
1.1	EAST OF UNIVERSE - WEST OF KIMMICK	35	41.2	41.4	36.1	45.3	-17.8%	-18.2%	-3.1%	-29.6%
1.2	EAST OF KIMMICK - WEST OF GOLF COURSE	45	48.1	35.4	43.7	30.8	-6.8%	21.4%	2.9%	31.5%
1.3	EAST OF GOLF COURSE - WEST OF EAGLE RANCH RD.	45	27.3	29.0	25.0	30.5	39.3%	35.6%	44.3%	32.2%
1.4	EAST OF EAGLE RANCH RD. - WEST OF COORS W. RAMPS	50	28.9	36.2	24.4	35.1	42.1%	27.6%	51.2%	29.8%
1.5	EAST OF COORS W. RAMPS - WEST OF COORS E. RAMPS	50	56.5	67.9	47.0	61.5	-13.0%	-35.8%	6.1%	-23.0%
2.1	EAST OF COORS E. RAMPS - WEST OF PDN/2ND WEST RAMPS	50	61.3	59.3	52.8	66.3	-22.6%	-18.7%	-5.5%	-32.7%
2.2	EAST OF PDN/2ND WEST RAMPS - WEST OF PDN/2ND EAST RAMPS	50	63.5	40.9	56.4	51.3	-26.9%	18.3%	-12.9%	-2.6%
2.3	EAST OF PDN/2ND EAST RAMPS - WEST OF JEFFERSON	50	58.8	44.2	42.5	56.8	-17.5%	11.6%	15.1%	-13.6%
2.4	EAST OF JEFFERSON - WEST OF PAN AM. WEST	45	40.1	27.0	29.9	24.2	11.0%	39.9%	33.6%	46.3%
2.5	EAST OF PAN AM. WEST - WEST OF PAN AM. EAST	45	24.3	32.7	19.7	44.3	46.0%	27.3%	56.2%	1.5%
3.1	EAST OF PAN AM. EAST - WEST OF SAN PEDRO	45	43.6	39.6	29.3	26.2	3.1%	11.9%	34.9%	41.8%
3.2	EAST OF SAN PEDRO - WEST OF LOUISIANA	45	46.1	46.6	38.8	40.0	-2.3%	-3.5%	13.7%	11.1%
3.3	EAST OF LOUISIANA - WEST OF WYOMING	55	46.4	42.4	42.7	26.4	15.6%	22.9%	22.4%	51.9%
4.1	EAST OF WYOMING - WEST OF BARSTOW	55	20.4	32.7	17.8	16.9	62.9%	40.6%	67.6%	69.2%
4.2	EAST OF BARSTOW - WEST OF VENTURA	55	48.5	44.1	26.1	25.6	11.9%	19.9%	52.6%	53.4%
4.3	EAST OF VENTURA - WEST OF HOLBROOK	55	27.8	52.0	19.8	47.0	49.4%	5.5%	63.9%	14.5%
4.4	EAST OF HOLBROOK - WEST OF EUBANK	55	47.0	37.8	48.5	41.3	14.5%	31.2%	11.8%	24.9%
5.1	EAST OF EUBANK - WEST OF BROWNING	55	38.1	39.8	40.4	41.5	30.6%	27.6%	26.6%	24.5%
5.2	EAST OF BROWNING - WEST OF LOWELL	55	48.9	49.9	51.7	50.7	11.1%	9.4%	5.9%	7.8%
5.3	EAST OF LOWELL - WEST OF TRAMWAY	55	50.1	49.6	51.7	45.1	8.9%	9.8%	6.0%	17.9%

AM Speed Differential



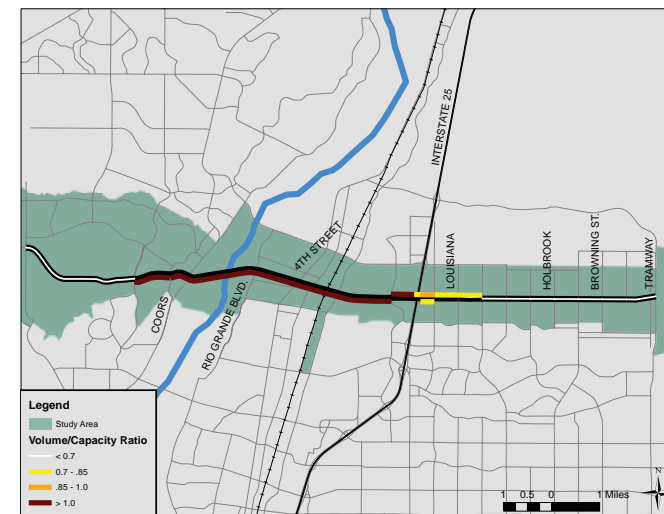
PM Speed Differential



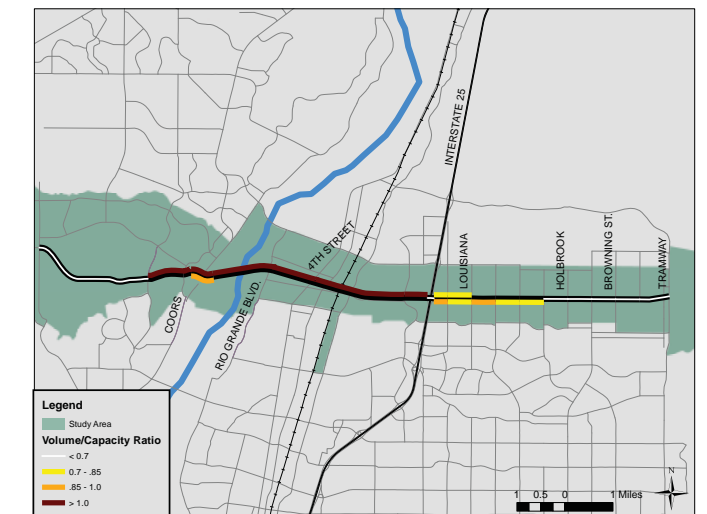
Volume/Capacity Ratio

ID	Location	Ratio			
		AM-WB	AM-EB	PM-WB	PM-EB
1.1	EAST OF UNIVERSE - WEST OF KIMMICK	0.09	0.24	0.37	0.11
1.2	EAST OF KIMMICK - WEST OF GOLF COURSE	0.08	0.23	0.27	0.12
1.3	EAST OF GOLF COURSE - WEST OF EAGLE RANCH RD.	0.26	1.17	1.12	0.53
1.4	EAST OF EAGLE RANCH RD. - WEST OF COORS W. RAMPS	0.35	1.82	1.52	0.58
1.5	EAST OF COORS W. RAMPS - WEST OF COORS E. RAMPS	0.35	2.45	1.42	0.88
2.1	EAST OF COORS E. RAMPS - WEST OF PDN/2ND WEST RAMPS	0.38	2.06	1.37	0.77
2.2	EAST OF PDN/2ND WEST RAMPS - WEST OF PDN/2ND EAST RAMPS	0.41	1.66	1.33	0.66
2.3	EAST OF PDN/2ND EAST RAMPS - WEST OF JEFFERSON	0.55	1.06	1.83	0.61
2.4	EAST OF JEFFERSON - WEST OF PAN AM. WEST	1.10	0.43	1.26	0.65
2.5	EAST OF PAN AM. WEST - WEST OF PAN AM. EAST	0.74	0.60	0.68	0.61
3.1	EAST OF PAN AM. EAST - WEST OF SAN PEDRO	0.96	0.76	0.74	0.87
3.2	EAST OF SAN PEDRO - WEST OF LOUISIANA	0.79	0.58	0.71	0.76
3.3	EAST OF LOUISIANA - WEST OF WYOMING	0.77	0.55	0.66	0.99
4.1	EAST OF WYOMING - WEST OF BARSTOW	0.68	0.36	0.44	0.74
4.2	EAST OF BARSTOW - WEST OF VENTURA	0.61	0.29	0.46	0.72
4.3	EAST OF VENTURA - WEST OF HOLBROOK	0.49	0.30	0.36	0.62
4.4	EAST OF HOLBROOK - WEST OF EUBANK	0.64	0.32	0.39	0.66
5.1	EAST OF EUBANK - WEST OF BROWNING	0.67	0.21	0.32	0.45
5.2	EAST OF BROWNING - WEST OF LOWELL	0.57	0.17	0.43	0.44
5.3	EAST OF LOWELL - WEST OF TRAMWAY	0.00	0.00	0.00	0.00

AM Volume/Capacity Ratio



PM Volume/Capacity Ratio



Travel Time & Delay

PM Peak Travel Time (seconds)	Universe	Golf Course Rd.	Eagle Ranch	Coors East Ramp	Paseo del Norte W. Ramp	Jefferson	Pan American West (I-25)	San Pedro	Louisiana	Wyoming	Ventura	Eubank	Tramway
Universe	X	243	333	349	495	619	690	740	785	853	1030	1112	1239
Golf Course Rd.	234	X	89	106	252	376	447	497	542	610	787	868	996
Eagle Ranch	343	109	X	17	162	286	357	408	453	521	698	779	907
Coors East Ramp	367	133	24	X	146	269	341	391	436	504	681	762	890
Paseo del Norte W. Ramp	552	318	209	185	X	124	195	245	290	358	535	617	744
Jefferson	704	470	361	337	153	X	71	122	166	235	411	493	621
Pan American West (I-25)	762	528	419	395	210	58	X	50	95	163	340	422	549
San Pedro	822	587	479	454	270	117	60	X	45	113	290	371	499
Louisiana	868	633	525	501	316	163	106	46	X	68	245	327	454
Wyoming	910	676	567	543	358	206	148	88	42	X	177	258	386
Ventura	1080	846	737	713	528	376	318	259	212	170	X	82	209
Eubank	1207	973	864	840	656	503	445	386	340	297	127	X	128
Tramway	1329	1095	986	962	777	625	567	508	462	419	249	122	X

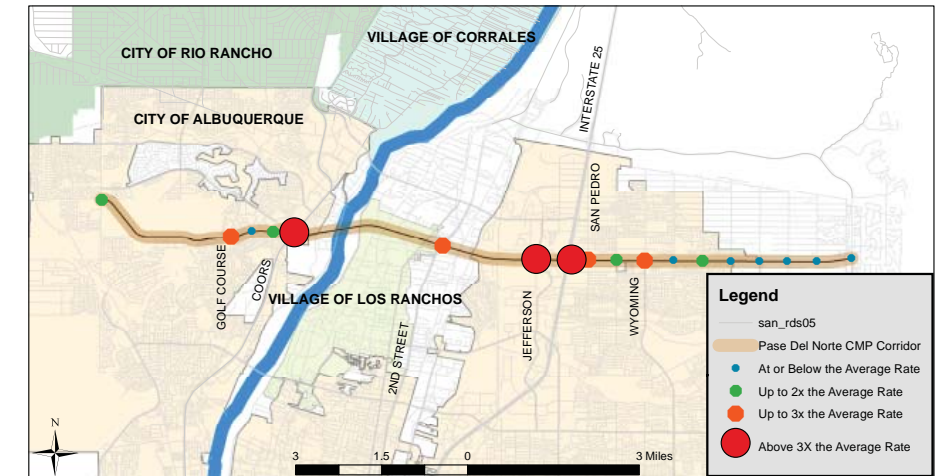
Distance (miles)	Universe	Golf Course Rd.	Eagle Ranch	Coors East Ramp	Paseo del Norte W. Ramp	Jefferson	Pan American West (I-25)	San Pedro	Louisiana	Wyoming	Ventura	Eubank	Tramway
Universe	X	2.5	3.3	3.5	6.1	8.0	8.5	8.9	9.4	9.9	10.9	11.9	13.5
Golf Course Rd.	2.5	X	0.8	0.9	3.6	5.5	6.0	6.4	6.9	7.4	8.4	9.4	11.0
Eagle Ranch	3.3	0.8	X	0.2	2.8	4.7	5.2	5.6	6.1	6.6	7.6	8.6	10.2
Coors East Ramp	3.5	0.9	0.2	X	2.6	4.6	5.0	5.5	5.9	6.5	7.5	8.4	10.1
Paseo del Norte W. Ramp	6.1	3.6	2.8	2.6	X	1.9	2.4	2.8	3.3	3.8	4.8	5.8	7.4
Jefferson	8.0	5.5	4.7	4.6	1.9	X	0.5	0.9	1.4	1.9	2.9	3.9	5.5
Pan American West (I-25)	8.5	6.0	5.2	5.0	2.4	0.5	X	0.4	0.9	1.4	2.4	3.4	5.0
San Pedro	8.9	6.4	5.6	5.5	2.8	0.9	0.4	X	0.5	1.0	2.0	3.0	4.6
Louisiana	9.4	6.9	6.1	5.9	3.3	1.4	0.9	0.5	X	0.5	1.5	2.5	4.1
Wyoming	9.9	7.4	6.6	6.5	3.8	1.9	1.4	1.0	0.5	X	1.0	2.0	3.6
Ventura	10.9	8.4	7.6	7.5	4.8	2.9	2.4	2.0	1.5	1.0	X	1.0	2.6
Eubank	11.9	9.4	8.6	8.4	5.8	3.9	3.4	3.0	2.5	2.0	1.0	X	1.6
Tramway	13.5	11.0	10.2	10.1	7.4	5.5	5.0	4.6	4.1	3.6	2.6	1.6	X

PM Peak Delay (seconds)	Universe	Golf Course Rd.	Eagle Ranch	Coors East Ramp	Paseo del Norte W. Ramp	Jefferson	Pan American West (I-25)	San Pedro	Louisiana	Wyoming	Ventura	Eubank	Tramway
Universe	X	7	36	41	-4	-17	16	32	37	73	184	200	222
Golf Course Rd.	-2	X	29	34	-11	-25	8	25	30	65	177	193	215
Eagle Ranch	46	48	X	5	-40	-53	-20	-4	1	37	148	164	186
Coors East Ramp	59	61	12	X	-45	-58	-25	-9	-4	32	143	159	181
Paseo del Norte W. Ramp	53	55	6	-6	X	-14	19	36	41	77	188	204	226
Jefferson	68	70	22	9	15	X	33	50	55	90	201	218	240
Pan American West (I-25)	88	89	41	29	35	19	X	17	22	57	168	185	207
San Pedro	113	115	67	55	61	45	26	X	5	40	152	168	190
Louisiana	120	122	73	61	67	52	32	6	X	35	147	163	185
Wyoming	129	131	83	70	76	61	42	16	9	X	111	128	150
Ventura	234	236	187	175	181	166	146	120	114	105	X	16	38
Eubank	296	298	249	237	243	228	208	182	176	167	62	X	22
Tramway	312	314	266	253	259	244	225	199	192	183	78	16	X

PM Peak Delay (seconds/mile)	Universe	Golf Course Rd.	Eagle Ranch	Coors East Ramp	Paseo del Norte W. Ramp	Jefferson	Pan American West (I-25)	San Pedro	Louisiana	Wyoming	Ventura	Eubank	Tramway
Universe	X	2.8	10.9	11.9	-0.6	-2.2	1.8	3.6	4.0	7.3	16.9	16.8	16.4
Golf Course Rd.	-0.7	X	38.1	36.7	-3.1	-4.5	1.4	3.9	4.4	8.9	21.1	20.6	19.6
Eagle Ranch	14.1	63.7	X	30.5	-14.2	-11.3	-3.9	-0.7	0.2	5.5	19.4	19.1	18.2
Coors East Ramp	17.0	65.8	75.4	X	-17.0	-12.8	-5.1	-1.6	-0.6	4.9	19.2	18.9	18.0
Paseo del Norte W. Ramp	8.7	15.3	2.3	-2.2	X	-7.1	8.1	12.9	12.4	20.1	39.1	35.2	30.5
Jefferson	8.5	12.8	4.6	2.1	8.1	X	68.9	55.3	39.1	47.5	69.5	55.9	43.5
Pan American West (I-25)	10.3	15.0	7.9	5.7	14.5	40.4	X	39.8	23.7	40.3	69.6	54.1	41.1
San Pedro	12.7	18.1	11.9	10.0	21.6	50.3	61.6	X	10.0	40.4	75.8	56.1	41.2
Louisiana	12.7	17.7	12.0	10.3	20.3	36.9	35.1	12.7	X	70.7	97.6	65.3	45.0
Wyoming	13.0	17.8	12.5	10.9	63.9	120.0	146.8	182.7	351.6	X	111.1	63.9	41.5
Ventura	21.4	28.1	24.6	23.5	37.7	57.1	60.5	60.2	75.9	104.5	X	16.4	14.7
Eubank	24.8	31.8	29.0	28.1	41.9	58.4	61.0	60.9	70.5	83.4	62.2	X	13.7
Tramway	23.1	28.6	26.0	25.2	35.0	44.3	44.7	43.1	46.8	50.7	30.0	10.2	X

Safety

Intersections with Reported Crashes 2005-2009



All Crashes along the Corridor

Crash Type	2005	2006	2007	2008	2009
Fatal accident	0	0	0	0	0
Non-fatal accident injury	164	176	136	151	204
Property damage only	395	460	419	392	497
All Crashes	559	636	555	543	701

Top Contributing Factors in Crashes Along Paseo del Norte

1. Driver inattention 34%
2. Following too close 27%
3. Failure to yield 8%
4. Excessive speed 4%
5. Red light running 4%