

Corridor Notes

- NM 528 is a north-south principal arterial that provides access through the City of Rio Rancho.
- The CMP corridor runs between Coors/Corrales Rd and US 550.
- Unlike most CMP corridors, NM 528 experiences much of its greatest **congestion** on the ends of the corridor, which serve entry and exit points from Rio Rancho to destinations across the metropolitan area. The most congested segments are northwest of Coors, southwest of US 550, and the portion between Northern and Southern. All congested segments are noteworthy for high V/C ratios but relatively smooth speeds.
- The highest **volumes** (43,000-50,000 daily vehicles) are found between Coors Bypass and Sabana Grande (north of Southern Blvd).
- The greatest **speeds** are found between Honduras Rd. and Idalia Rd.
- Overall crash rates along NM 528 are below the regional average. Intersections at Ellison, Coors/Corrales, and Southern have crash rates more than twice the regional average.
- The projected **growth** by 2035 in the study area is 40% in population and 35 % in employment. Portions of western Rio Rancho which rely on NM 528 for access to the City of Albuquerque are projected to grow at a far greater rate.

Transit Characteristics

- Two ABQ Ride routes pass along NM 528 between Southern and Coors. Route 251 provides connections between Rio Rancho, the Rail Runner station at El Pueblo, and the Journal Center. Commuter Route 551 follows the same route (without a stop at the El Pueblo Rail Runner station).
- Overall ridership among the routes serving NM 528 is modest. Routes 251 and 551 carried a combined 250 riders per weekday in April 2011.
- Northwest Transit Center at Coors and Ellison is near the southern terminus of the NM 528 CMP corridor.

Profile & Statistics

Corridor Profile			
Study Area	26.7 Sq. Miles		
Length & No. of Segments	11.1 Miles - 25 segments		
Functional Class	Principal Arterial		
Access Control	Limited access: Ellison to US 550		
Lanes	4 - 8 lanes		
Intelligent Transportation Systems	Designated corridor: Yes ITS deployment: Yes - PF, CCTV, DMS, VDS		
Transit	ABQ Ride : Route 551 (commuter), Route 251 (Rail Runner connection)		
Bicycle Facilities	Lane: Westside to Southern		
	Trail: Westside to Northern		
	Route: Northern to US 550		
Summary Data			
Daily Volume	20,000 - 50,000		
Average Speeds (PM North)	18 - 53 mph		
Average Speeds (PM South)	29 - 57 mph		
Total Delay (PM North)	196 seconds (18 sec./mile)		
Total Delay (PM South)	136 seconds (12 sec./mile)		
Demographic Trends			
Measure	2000	2008	2035
Population	33,822	46,404	65,167
Employment	20,366	24,317	32,765
Corridor Ranks			
Volume/Capacity Ratio	11 / 30		
Speed Differential	25 / 30		
Crash Rates	24 / 30		
Overall Rank	21 / 30		

ID and Segment Names

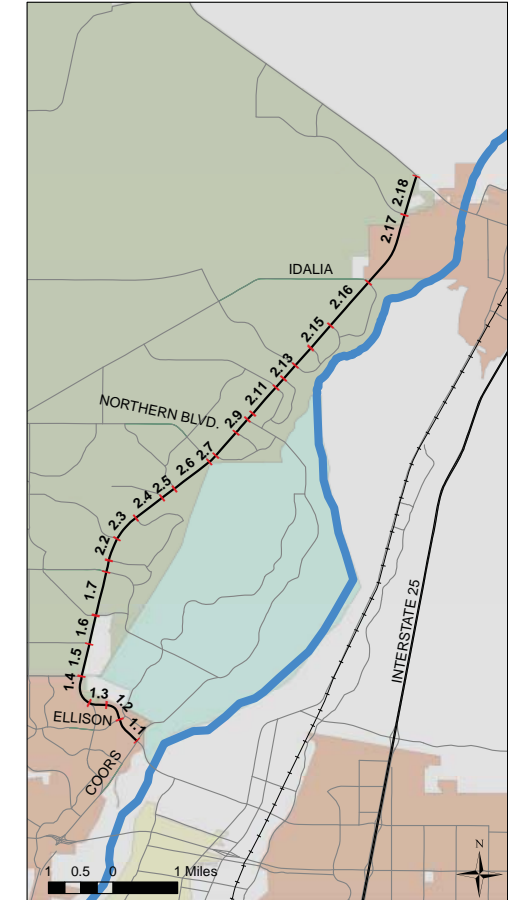
ID	Location	Length (Miles)	Posted Speed (MPH)	2010 Volume (AWDT)
1.1	NORTHWEST OF COORS/CORRALES RD - EAST OF CALLE CUERVO	0.44	40	34,746
1.2	WEST OF CALLE CUERVO - EAST OF ELLISON	0.33	40	37,976
1.3	WEST OF ELLISON - COORS BYPASS	0.27	40	26,280
1.4	WEST OF COORS BYPASS - SOUTH OF WESTSIDE BLVD	0.47	40	42,614
1.5	NORTH OF WESTSIDE BLVD - SOUTH OF 19TH AVE	0.51	40	50,240
1.6	NORTH OF 19TH AVE - SOUTH OF SARA	0.45	40	45,248
1.7	NORTH OF SARA - SOUTH OF SOUTHERN	0.70	40	40,075
2.1	NORTH OF SOUTHERN - SOUTH OF SABANA GRANDE	0.18	40	48,855
2.2	NORTH OF SABANA GRANDE - SOUTH OF HIGH RESORT	0.36	40	43,600
2.3	NORTH OF HIGH RESORT - SOUTH OF LEON GRANDE	0.44	45	38,797
2.4	NORTH OF LEON GRANDE - SOUTH OF SUNDT	0.51	45	35,011
2.5	NORTH OF SUNDT - SOUTH OF ROCKAWAY	0.24	45	33,712
2.6	NORTH OF ROCKAWAY - SOUTH OF NORTHERN	0.68	45	32,790
2.7	N.E. OF NORTHERN - S.W. OF RIO VISTA	0.14	50	26,892
2.8	N.E. RIO VISTA - S.W. OF RIO ARRIBA	0.47	50	25,285
2.9	N.E. OF RIO ARRIBA - S.W. OF CORRALES RD	0.27	50	20,181
2.10	NORTH OF CORRALES RD - SOUTH OF CHEVRON/BK ACCESS RD	0.12	55	26,299
2.11	NORTH OF CHEVRON/BK ACCESS RD - SOUTH OF GRANDE VISTA	0.54	55	25,597
2.12	NORTH OF GRANDE VISTA - SOUTH OF SANDIA VISTA	0.18	55	25,029
2.13	NORTH OF SANDIA VISTA - SOUTH OF IRIS/RIVERSIDE	0.28	55	33,576
2.14	NORTH OF IRIS/RIVERSIDE - SOUTH OF HONDURAS RD	0.36	55	22,254
2.15	NORTH OF HONDURAS RD - SOUTH OF RIVERSIDE (NORTH)	0.47	55	22,833
2.16	NORTH OF RIVERSIDE (NORTH) - SOUTH OF IDALIA	0.89	55	24,627
2.17	NORTH OF IDALIA - SOUTH OF ENCHANTED HILLS RD	1.21	55	27,539
2.18	NORTH OF ENCHANTED HILLS RD - SOUTH OF U.S. 550	0.63	55	27,920

Access Characteristics

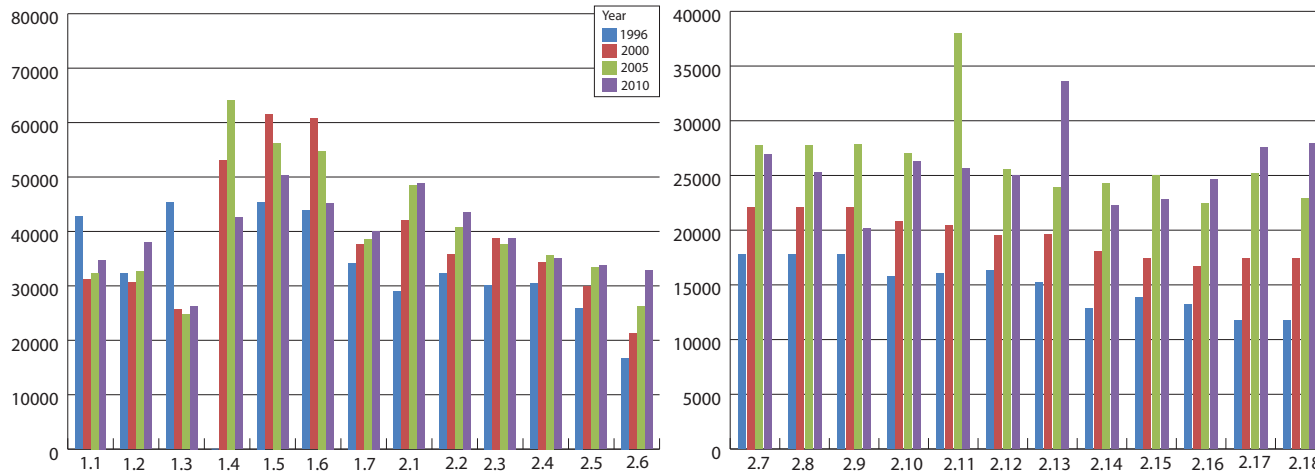
ID	North-Bound				South-Bound				Center-Turn Lanes
	Driveways	Intersections	Right-Turn Lanes	On-Street Parking	Driveways	Intersections	Right-Turn Lanes	On-Street Parking	
1.1	8	1	1	No	8	1	1	No	Median Turn Bay
1.2	5	1	0	No	2	1	1	No	Median Turn Bay
1.3	2	0	0	No	0	1	1	No	No
1.4*	0	1	1	No	0	0	0	No	No
1.5*	2	1	0	No	1	1	1	No	Median Turn Bay
1.6*	1	1	1	No	1	1	0	No	No
1.7*	5	3	1	No	6	3	0	No	Median Turn Bay
2.1*	0	1	1	No	1	1	1	No	No
2.2*	0	0	0	No	0	1	1	No	No
2.3*	0	0	1	No	2	4	3	No	Median Turn Bay
2.4*	0	1	0	No	0	2	1	No	No
2.5*	0	0	0	No	0	1	0	No	No
2.6*	0	2	0	No	4	2	1	No	Median Turn Bay
2.7*	0	1	1	No	0	1	1	No	No
2.8*	1	1	1	No	0	1	0	No	Median Turn Bay
2.9*	0	1	0	No	0	1	1	No	No
2.10*	1	0	2	No	0	1	0	No	No
2.11*	0	2	1	No	0	0	0	No	Median Turn Bay
2.12*	0	1	1	No	0	0	0	No	No
2.13*	0	1	1	No	0	0	0	No	No
2.14*	0	1	1	No	0	1	1	No	No
2.15*	0	1	1	No	0	1	0	No	No
2.16*	0	1	1	No	0	1	1	No	Median Turn Bay
2.17*	2	2	1	No	5	4	1	No	Median Turn Bay
2.18*	3	1	1	No	0	2	2	No	Median Turn Bay
Total	30	25	18		30	32	18		

*Indicates access-controlled segment

ID Location



Average Weekday Daily Traffic



Volume Notes

- The heaviest volumes along NM 528 occur between Westside Blvd and 19th Ave (50,000 AWDT in 2010).
- Overall average volumes increased by 14% between 2000 and 2008. During that same period, the population in the study area increased by 37%.
- The highest volume increase (71%) from 2000 to 2010 occurred between Sandia Vista Rd and Iris Rd.

Access Notes

- NM 528 is an **access-controlled facility** between Ellison and US 550.
- There are median turn bays across various sections of the corridor.
- There are 27 **signalized intersections** along the CMP corridor; an average of one signal every **0.41 miles**.

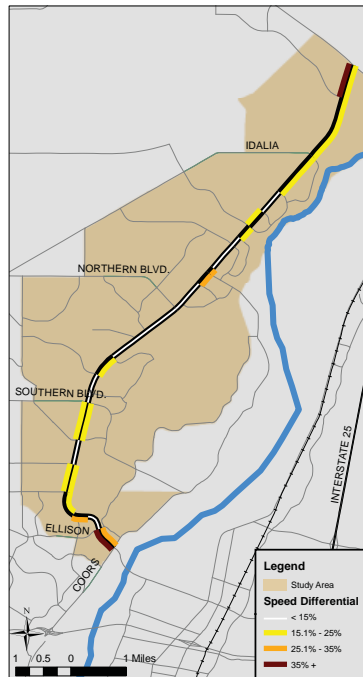
Speed Differential (Observed Speed vs. Posted Speed)

ID	Location	Posted Speed	Speed (MPH)				Speed Differential			
			AM-SB	AM-NB	PM-SB	PM-NB	AM-SB	AM-NB	PM-SB	PM-NB
1.1	NORTHWEST OF COORS/CORRALES RD - EAST OF CALLE CUERVO	40	22.1	27.4	30.1	33.1	44.8%	31.6%	24.8%	17.2%
1.2	WEST OF CALLE CUERVO - EAST OF ELLISON	40	36.9	39.5	36.9	40.1	7.8%	1.1%	7.7%	-0.2%
1.3	WEST OF ELLISON - COORS BYPASS	40	26.6	43.1	32.0	46.0	33.4%	-7.8%	19.9%	-14.9%
1.4	WEST OF COORS BYPASS - SOUTH OF WESTSIDE BLVD	40	44.5	33.0	44.8	34.0	-11.3%	17.6%	-12.1%	14.9%
1.5	NORTH OF WESTSIDE BLVD - SOUTH OF 19TH AVE	40	34.0	31.5	29.3	37.6	15.0%	21.2%	26.8%	6.1%
1.6	NORTH OF 19TH AVE - SOUTH OF SARA	40	38.5	39.2	36.2	38.3	3.7%	1.9%	9.5%	4.4%
1.7	NORTH OF SARA - SOUTH OF SOUTHERN	40	33.5	31.1	36.1	18.4	16.3%	22.4%	9.7%	54.1%
2.1	NORTH OF SOUTHERN - SOUTH OF SABANA GRANDE	40	44.2	39.0	48.6	34.9	-10.5%	2.6%	-21.5%	12.9%
2.2	NORTH OF SABANA GRANDE - SOUTH OF HIGH RESORT	40	44.8	40.8	42.0	43.9	-12.0%	-2.1%	-5.0%	-9.8%
2.3	NORTH OF HIGH RESORT - SOUTH OF LEON GRANDE	45	43.7	37.8	35.1	42.6	2.8%	15.9%	21.9%	5.4%
2.4	NORTH OF LEON GRANDE - SOUTH OF SUNDT	45	47.2	43.0	28.6	43.3	-4.8%	4.4%	36.5%	3.8%
2.5	NORTH OF SUNDT - SOUTH OF ROCKAWAY	45	48.7	45.0	36.9	45.2	-8.1%	0.0%	17.9%	-0.4%
2.6	NORTH OF ROCKAWAY - SOUTH OF NORTHERN	45	48.8	46.7	41.7	44.5	-8.5%	-3.7%	7.4%	1.1%
2.7	N.E. OF NORTHERN - S.W. OF RIO VISTA	50	52.5	52.5	44.6	44.6	-5.0%	-5.0%	10.7%	10.7%
2.8	N.E. RIO VISTA - S.W. OF RIO ARRIBA	50	54.7	52.8	50.8	52.4	-9.3%	-5.6%	-1.6%	-4.7%
2.9	N.E. OF RIO ARRIBA - S.W. OF CORRALES RD	50	53.2	37.4	51.1	18.2	-6.5%	25.3%	-2.2%	63.7%
2.10	NORTH OF CORRALES RD - SOUTH OF CHEVRON/BK ACCESS RD	55	51.4	40.0	40.2	36.9	6.5%	27.4%	26.9%	32.9%
2.11	NORTH OF CHEVRON/BK ACCESS RD - SOUTH OF GRANDE VISTA	55	56.9	52.3	52.1	52.6	-3.5%	5.0%	5.2%	4.3%
2.12	NORTH OF GRANDE VISTA - SOUTH OF SANDIA VISTA	55	55.0	54.4	51.6	52.2	0.1%	1.1%	6.2%	5.1%
2.13	NORTH OF SANDIA VISTA - SOUTH OF IRIS/RIVERSIDE	55	49.8	42.3	48.4	37.8	9.5%	23.2%	12.1%	31.3%
2.14	NORTH OF IRIS/RIVERSIDE - SOUTH OF HONDURAS RD	55	46.1	49.9	46.3	45.8	16.1%	9.2%	15.9%	16.7%
2.15	NORTH OF HONDURAS RD - SOUTH OF RIVERSIDE (NORTH)	55	57.2	55.0	57.3	52.2	-4.0%	0.0%	-4.2%	5.1%
2.16	NORTH OF RIVERSIDE (NORTH) - SOUTH OF IDALIA	55	54.8	43.4	54.3	51.9	0.4%	21.0%	1.3%	5.6%
2.17	NORTH OF IDALIA - SOUTH OF ENCHANTED HILLS RD	55	47.5	46.7	47.9	43.9	13.7%	15.1%	12.9%	20.2%
2.18	NORTH OF ENCHANTED HILLS RD - SOUTH OF U.S. 550	55	35.6	45.2	32.1	35.3	35.3%	17.9%	41.6%	35.9%

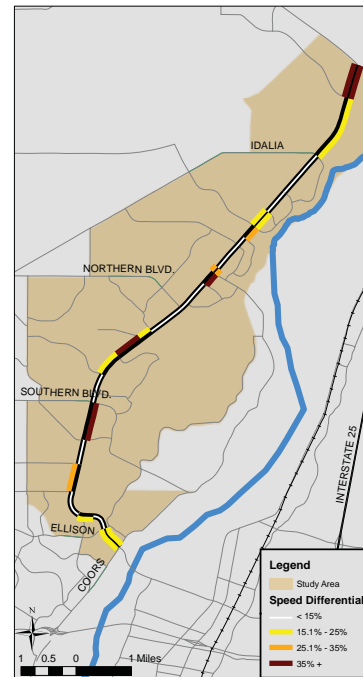
Volume/Capacity Ratio

ID	Location	Ratio			
		AM-SB	AM-NB	PM-SB	PM-NB
1.1	NORTHWEST OF COORS/CORRALES RD - EAST OF CALLE CUERVO	0.39	1.01	1.00	0.71
1.2	WEST OF CALLE CUERVO - EAST OF ELLISON	0.53	0.69	1.18	0.53
1.3	WEST OF ELLISON - COORS BYPASS	0.32	0.59	0.69	0.46
1.4	WEST OF COORS BYPASS - SOUTH OF WESTSIDE BLVD	1.15	0.71	0.96	1.30
1.5	NORTH OF WESTSIDE BLVD - SOUTH OF 19TH AVE	0.72	0.34	0.48	0.69
1.6	NORTH OF 19TH AVE - SOUTH OF SARA	0.71	0.33	0.48	0.72
1.7	NORTH OF SARA - SOUTH OF SOUTHERN	0.48	0.29	0.42	0.57
2.1	NORTH OF SOUTHERN - SOUTH OF SABANA GRANDE	0.95	0.65	1.01	0.99
2.2	NORTH OF SABANA GRANDE - SOUTH OF HIGH RESORT	1.27	0.77	1.46	1.09
2.3	NORTH OF HIGH RESORT - SOUTH OF LEON GRANDE	0.85	0.66	0.89	1.09
2.4	NORTH OF LEON GRANDE - SOUTH OF SUNDT	0.82	0.66	0.95	0.93
2.5	NORTH OF SUNDT - SOUTH OF ROCKAWAY	0.75	0.71	0.93	0.89
2.6	NORTH OF ROCKAWAY - SOUTH OF NORTHERN	0.85	1.00	1.06	1.08
2.7	N.E. OF NORTHERN - S.W. OF RIO VISTA	0.47	0.34	0.59	0.50
2.8	N.E. RIO VISTA - S.W. OF RIO ARRIBA	0.45	0.42	0.53	0.58
2.9	N.E. OF RIO ARRIBA - S.W. OF CORRALES RD	0.41	0.48	0.51	0.55
2.10	NORTH OF CORRALES RD - SOUTH OF CHEVRON/BK ACCESS RD	0.59	0.44	0.82	0.61
2.11	NORTH OF CHEVRON/BK ACCESS RD - SOUTH OF GRANDE VISTA	0.53	0.55	0.73	0.68
2.12	NORTH OF GRANDE VISTA - SOUTH OF SANDIA VISTA	0.51	0.59	0.74	0.71
2.13	NORTH OF SANDIA VISTA - SOUTH OF IRIS/RIVERSIDE	0.54	0.80	0.91	0.98
2.14	NORTH OF IRIS/RIVERSIDE - SOUTH OF HONDURAS RD	0.56	0.72	0.89	0.80
2.15	NORTH OF HONDURAS RD - SOUTH OF RIVERSIDE (NORTH)	0.56	0.44	0.89	0.51
2.16	NORTH OF RIVERSIDE (NORTH) - SOUTH OF IDALIA	0.43	0.65	0.80	0.53
2.17	NORTH OF IDALIA - SOUTH OF ENCHANTED HILLS RD	0.75	0.45	1.34	0.38
2.18	NORTH OF ENCHANTED HILLS RD - SOUTH OF U.S. 550	0.39	0.84	0.93	0.47

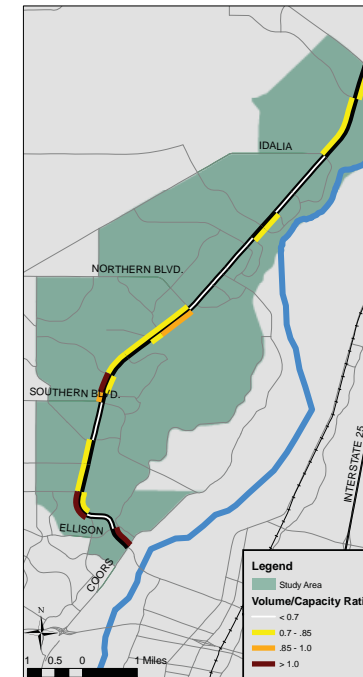
AM Speed Differential



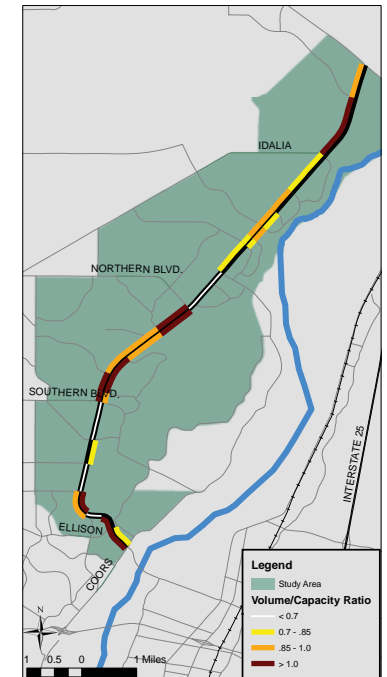
PM Speed Differential



AM Volume/Capacity Ratio



PM Volume/Capacity Ratio



Travel Time & Delay

PM Peak Travel Time (seconds)	Corrales Rd												
	Coors/Corrales Rd.	Ellison	Westside	Sara Rd.	Southern	Leon Grande	Northern	Corrales Rd.	Grande Vista	Honduras Rd.	Idalia	U.S. 550	
Coors/Corrales Rd.	X	78	149	241	378	463	579	676	725	792	885	1049	
Ellison	85	X	71	163	300	385	502	598	647	714	808	971	
Westside	154	69	X	92	229	314	430	527	576	643	736	900	
Sara Rd.	262	177	108	X	137	222	338	435	484	551	645	808	
Southern	331	246	178	69	X	85	202	298	348	414	508	671	
Leon Grande	420	335	267	158	89	X	117	213	263	329	423	586	
Northern	567	482	413	305	236	147	X	97	146	212	306	469	
Corrales Rd.	631	545	477	369	299	210	63	X	49	116	209	373	
Grande Vista	679	594	525	417	348	259	112	49	X	67	160	324	
Honduras Rd.	740	655	586	478	409	320	173	109	61	X	94	257	
Idalia	828	743	674	566	497	408	261	197	149	88	X	163	
U.S. 550	989	904	836	727	658	569	422	359	310	249	161	X	

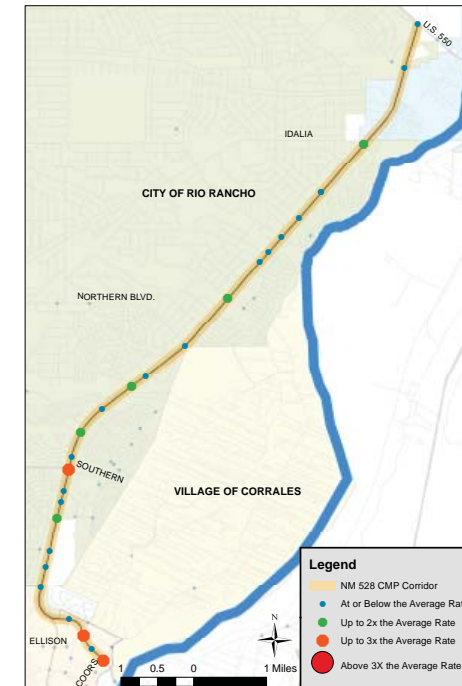
Distance (miles)	Corrales Rd												
	Coors/Corrales Rd.	Ellison	Westside	Sara Rd.	Southern	Leon Grande	Northern	Corrales Rd.	Grande Vista	Honduras Rd.	Idalia	U.S. 550	
Coors/Corrales Rd.	X	0.8	1.5	2.5	3.2	4.2	5.6	6.5	7.1	7.9	9.3	11.1	
Ellison	0.8	X	0.7	1.7	2.4	3.4	4.8	5.7	6.4	7.2	8.5	10.4	
Westside	1.5	0.7	X	1.0	1.7	2.6	4.1	5.0	5.6	6.4	7.8	9.6	
Sara Rd.	2.5	1.7	1.0	X	0.7	1.7	3.1	4.0	4.7	5.5	6.8	8.7	
Southern	3.2	2.4	1.7	0.7	X	1.0	2.4	3.3	4.0	4.8	6.1	8.0	
Leon Grande	4.2	3.4	2.6	1.7	1.0	X	1.4	2.3	3.0	3.8	5.1	7.0	
Northern	5.6	4.8	4.1	3.1	2.4	1.4	X	0.9	1.5	2.4	3.7	5.5	
Corrales Rd.	6.5	5.7	5.0	4.0	3.3	2.3	0.9	X	0.7	1.5	2.8	4.7	
Grande Vista	7.1	6.4	5.6	4.7	4.0	3.0	1.5	0.7	X	0.8	2.2	4.0	
Honduras Rd.	7.9	7.2	6.4	5.5	4.8	3.8	2.4	1.5	0.8	X	1.4	3.2	
Idalia	9.3	8.5	7.8	6.8	6.1	5.1	3.7	2.8	2.2	1.4	X	1.8	
U.S. 550	11.1	10.4	9.6	8.7	8.0	7.0	5.5	4.7	4.0	3.2	1.8	X	

PM Peak Delay (seconds)	Corrales Rd												
	Coors/Corrales Rd.	Ellison	Westside	Sara Rd.	Southern	Leon Grande	Northern	Corrales Rd.	Grande Vista	Honduras Rd.	Idalia	U.S. 550	
Coors/Corrales Rd.	X	8	12	17	91	93	95	128	134	147	152	196	
Ellison	16	X	4	9	83	85	87	120	126	139	144	187	
Westside	17	2	X	5	79	80	82	116	121	135	140	183	
Sara Rd.	38	23	21	X	74	76	78	111	117	130	135	178	
Southern	45	29	28	7	X	2	4	37	43	56	61	104	
Leon Grande	51	35	33	12	5	X	2	36	41	55	60	103	
Northern	83	67	66	44	38	32	X	33	39	53	58	101	
Corrales Rd.	83	67	66	45	38	32	0	X	6	19	24	67	
Grande Vista	88	72	71	50	43	37	5	5	X	14	19	62	
Honduras Rd.	96	80	78	57	51	45	13	13	8	X	5	48	
Idalia	95	80	78	57	50	45	12	12	7	0	X	43	
U.S. 550	136	121	119	98	91	86	53	53	48	41	41	X	

PM Peak Delay (seconds/mile)	Corrales Rd												
	Coors/Corrales Rd.	Ellison	Westside	Sara Rd.	Southern	Leon Grande	Northern	Corrales Rd.	Grande Vista	Honduras Rd.	Idalia	U.S. 550	
Coors/Corrales Rd.	X	10.6	8.2	6.9	28.7	22.3	17.0	19.8	18.8	18.5	16.4	17.6	
Ellison	20.1	X	5.6	5.3	34.5	25.0	18.0	21.1	19.8	19.4	16.9	18.1	
Westside	11.3	2.1	X	5.0	47.4	30.4	20.3	23.4	21.6	21.0	18.0	19.0	
Sara Rd.	15.4	13.3	21.9	X	106.0	45.1	25.0	27.9	25.1	23.8	19.8	20.6	
Southern	14.2	12.2	16.8	9.6	X	1.6	1.5	11.3	10.8	11.8	10.0	13.1	
Leon Grande	12.2	10.3	12.7	7.3	5.6	X	1.5	15.4	13.8	14.4	11.6	14.7	
Northern	14.8	13.9	16.1	14.3	15.6	22.5	X	38.1	25.2	22.3	15.5	18.2	
Corrales Rd.	12.8	11.8	13.3	11.2	11.5	14.0	0.3	X	8.3	12.9	8.5	14.4	
Grande Vista	12.3	11.4	12.6	10.7	10.8	12.5	3.3	7.4	X	16.6	8.6	15.4	
Honduras Rd.	12.0	11.2	12.2	10.5	10.6	11.9	5.5	8.5	9.5	X	3.8	15.1	
Idalia	10.2	9.3	10.0	8.3	8.2	8.7	3.3	4.3	3.3	-0.3	X	23.5	
U.S. 550	12.2	11.6	12.4	11.3	11.4	12.3	9.6	11.4	12.1	12.7	22.3	X	

Safety

Intersections with Reported Crashes 2005-2009



All Crashes along the Corridor

Crash Type	2005	2006	2007	2008	2009
Fatal accident	2	0	0	2	1
Non-fatal accident injury	166	132	152	104	145
Property damage only	238	240	352	219	238
All Crashes	406	372	504	325	384

Top Contributing Factors in Crashes Along Isleta

1. Following too close 32 %
2. Driver inattention 24 %
3. Failure to yield 14 %
4. Red light running 4 %
5. Alcohol involved 3 %