



*Metropolitan Transportation Board  
September 15, 2017*



---

# *The 2040 Revised Forecast*

---

AN ADMINISTRATIVE MODIFICATION TO THE  
2040 METROPOLITAN TRANSPORTATION PLAN

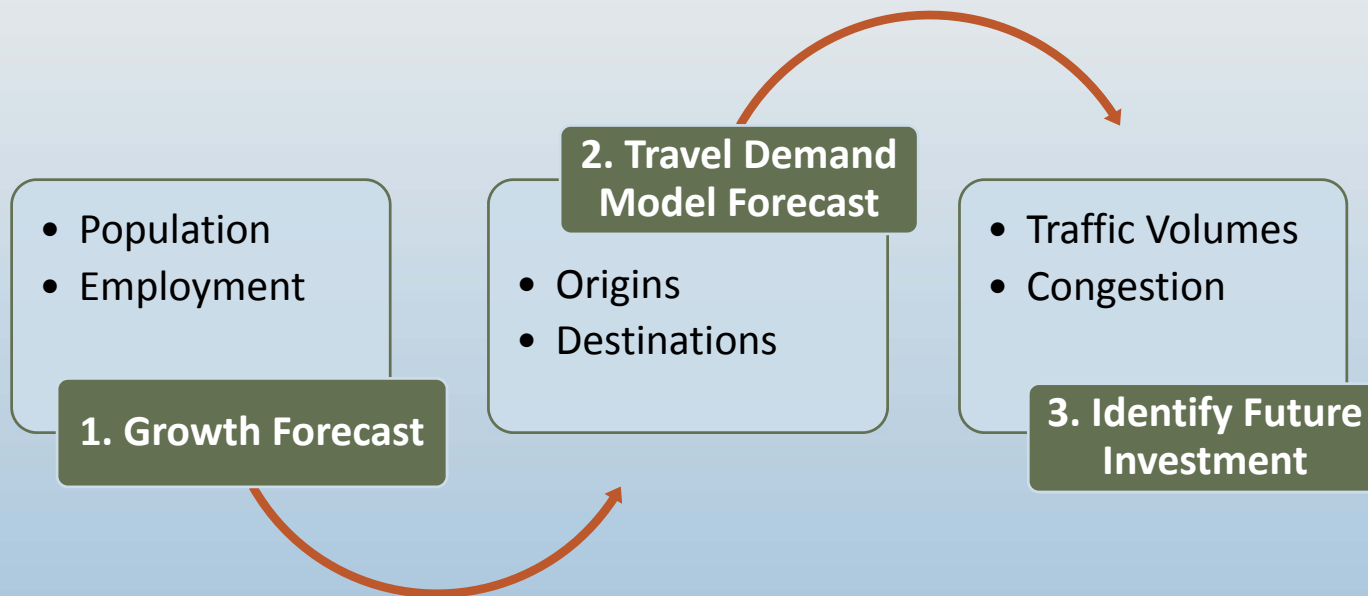
# What does the Revised Forecast Affect?

---

- An Alternative 2040 Socioeconomic Forecast
- An Alternative 2040 Travel Demand Forecast
- One modification to the project list – MDS Interchange

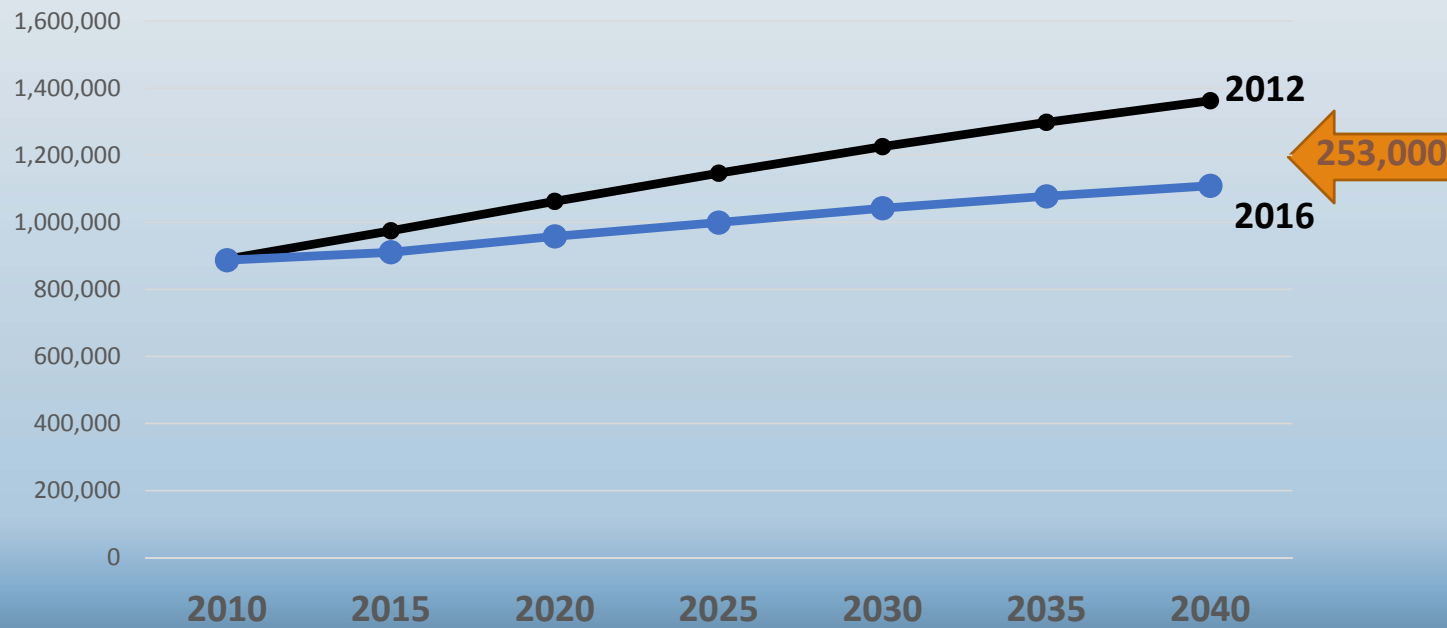
# How does it relate to the MTP?

---



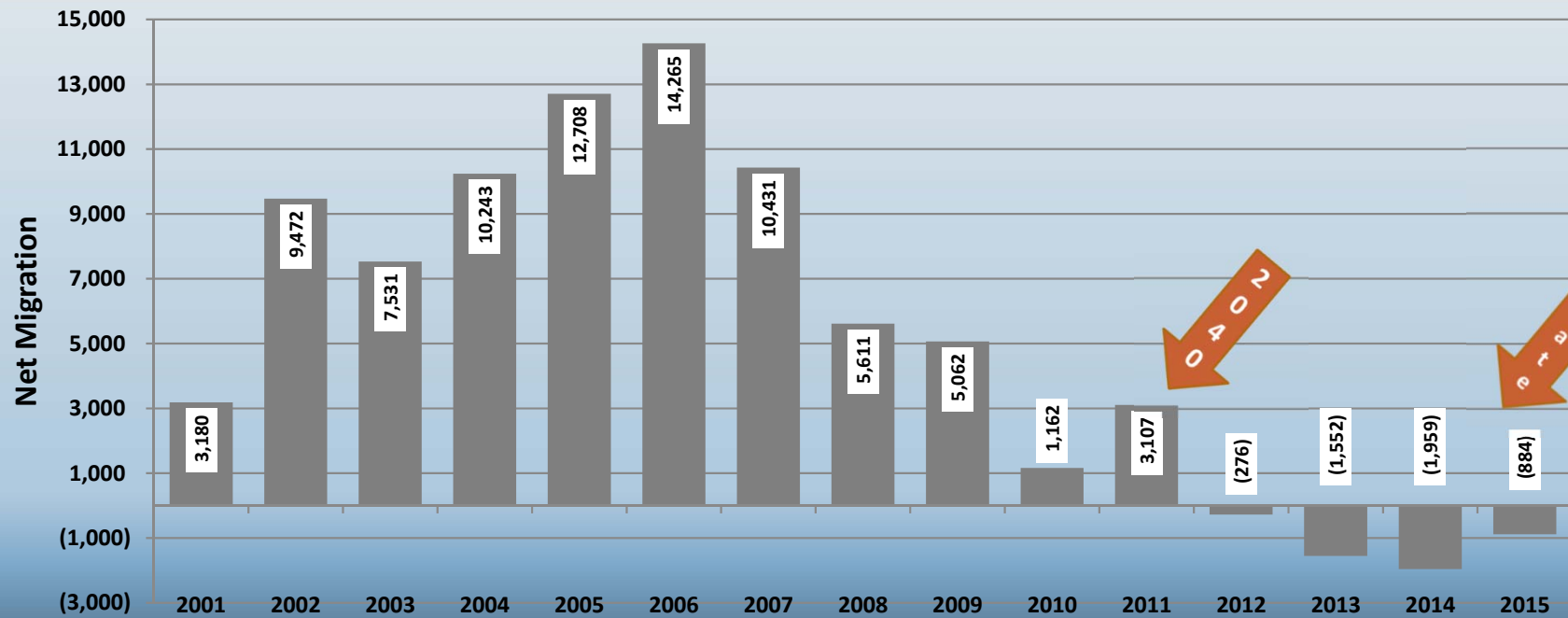
# Why are we doing it?

GPS Population Projections, 2012 and 2016



# Why were earlier forecasts higher?

Net Migration



# How did we develop the Revised Forecast?

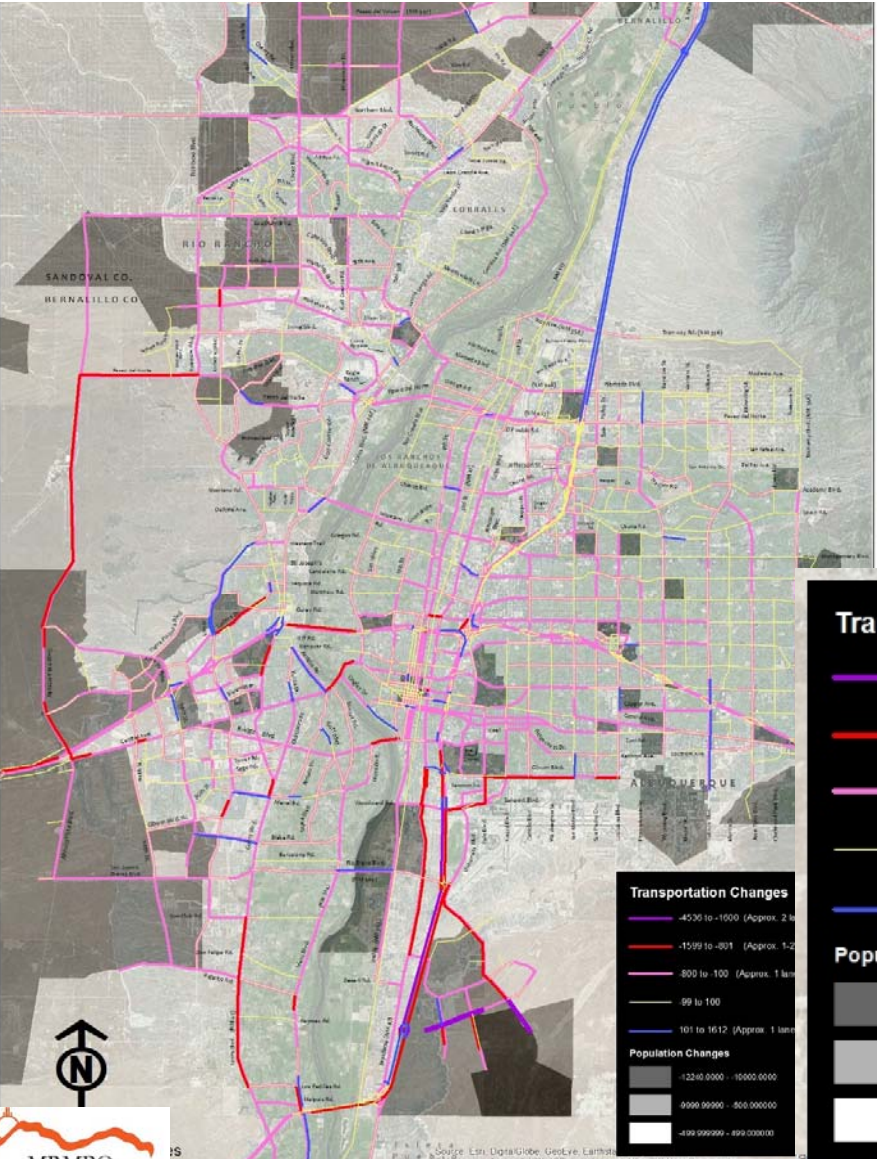
---



The logo for Cube, featuring the word "Cube" in a white, sans-serif font above the word "JAVELIN" in a smaller, yellow, sans-serif font, all set against a blue background with a subtle, textured pattern.

# What are the transportation impacts?

	Original 2040 MTP	2040 Revised Forecast	2040 Differences (%)
Daily Vehicle Miles Traveled	28,671,051	24,927,665	-13.1%
Average Speed	30.2	36.7	21.5%
PM Peak Hour Hours of Delay	61,079	25,588	-58.1%
PM Peak Hr. Miles of Travel	2,758,888	2,368,433	-14.2%

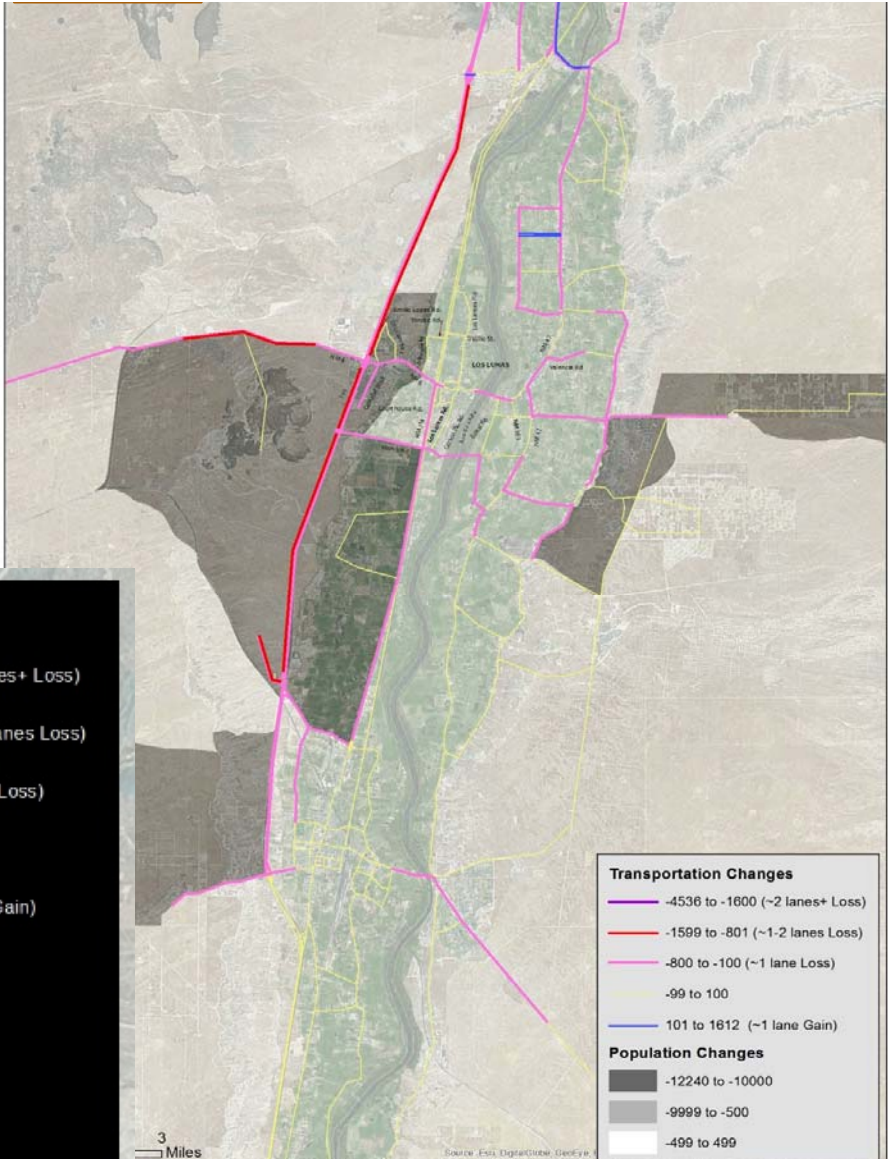


**Transportation Changes**

- -4536 to -1600 (Approx. 2 lanes+ Loss)
- -1599 to -801 (Approx. 1-2 lanes Loss)
- -800 to -100 (Approx. 1 lane Loss)
- -99 to 100
- 101 to 1612 (Approx. 1 lane Gain)

**Population Changes**

- 12240.0000 - 10000.0000
- 9999.99990 - -500.000000
- 499.999999 - 499.000000



**Transportation Changes**

- -4536 to -1600 (~2 lanes+ Loss)
- -1599 to -801 (~1-2 lanes Loss)
- -800 to -100 (~1 lane Loss)
- -99 to 100
- 101 to 1612 (~1 lane Gain)

**Population Changes**

- 12240 to -10000
- 9999 to -500
- 499 to 499



# What are the benefits of a Revised Forecast?

---

- Maintains the integrity of the MTP development process
  - Same model environment
  - Same data assumptions
  - Same network – except MDS
  
- Allows for flexibility to respond to changing growth expectations
  - Avoid “over-designing” projects
  - Responsible planning

# What we are asking of the MTB?

---

- Concurrence with the Administrative Modification to the 2040 MTP to use the 2040 Revised Forecast over the original 2040 MTP Forecasts.
  
- Awareness and promotion among agency staff and consultants of the 2040 Revised Forecast for Project Planning.